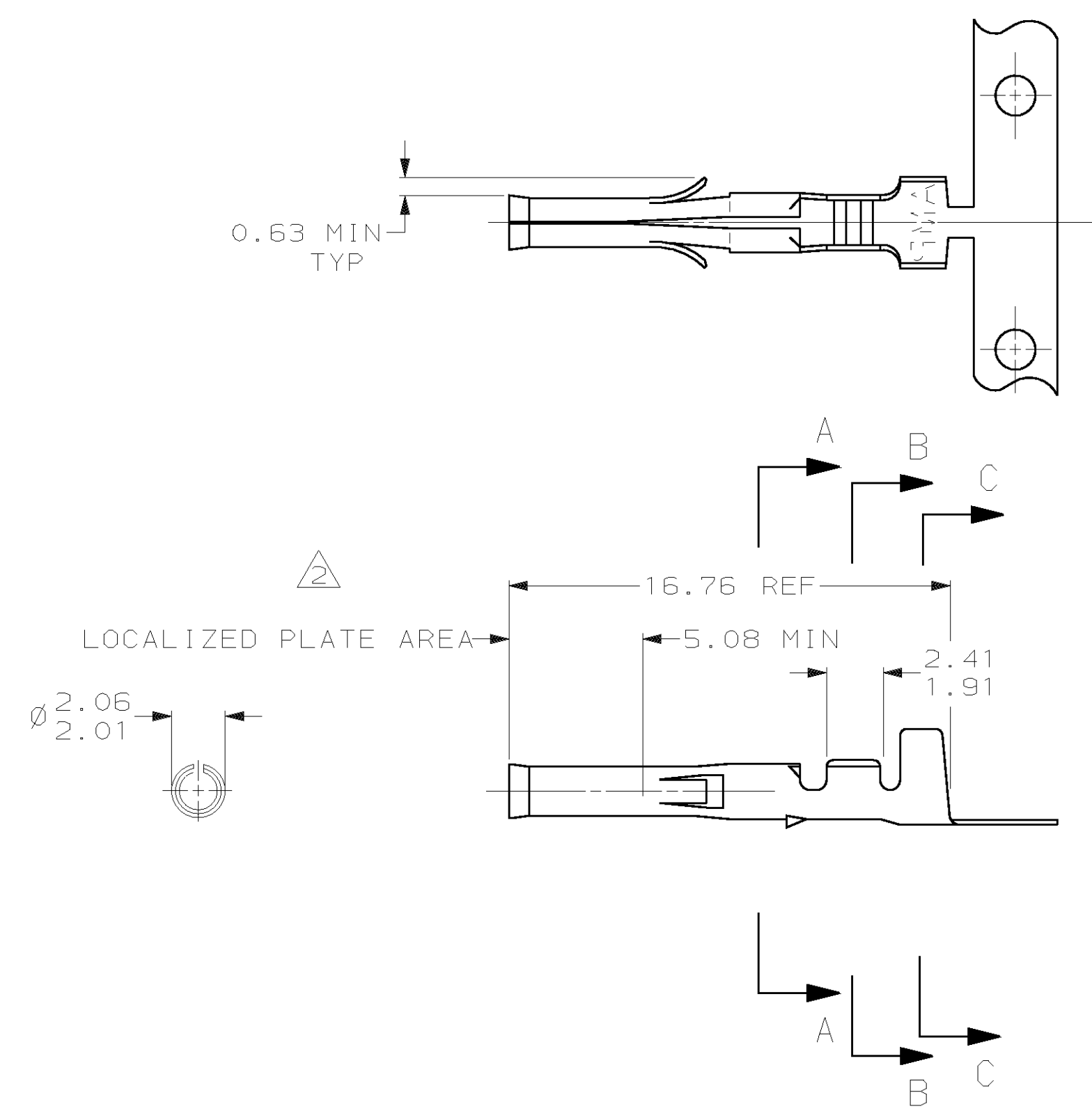
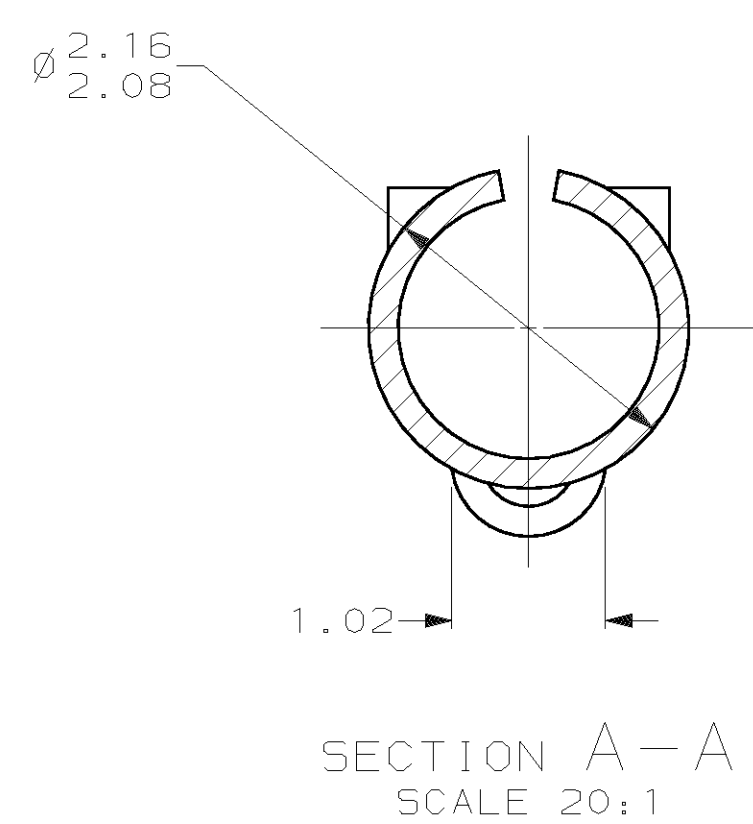
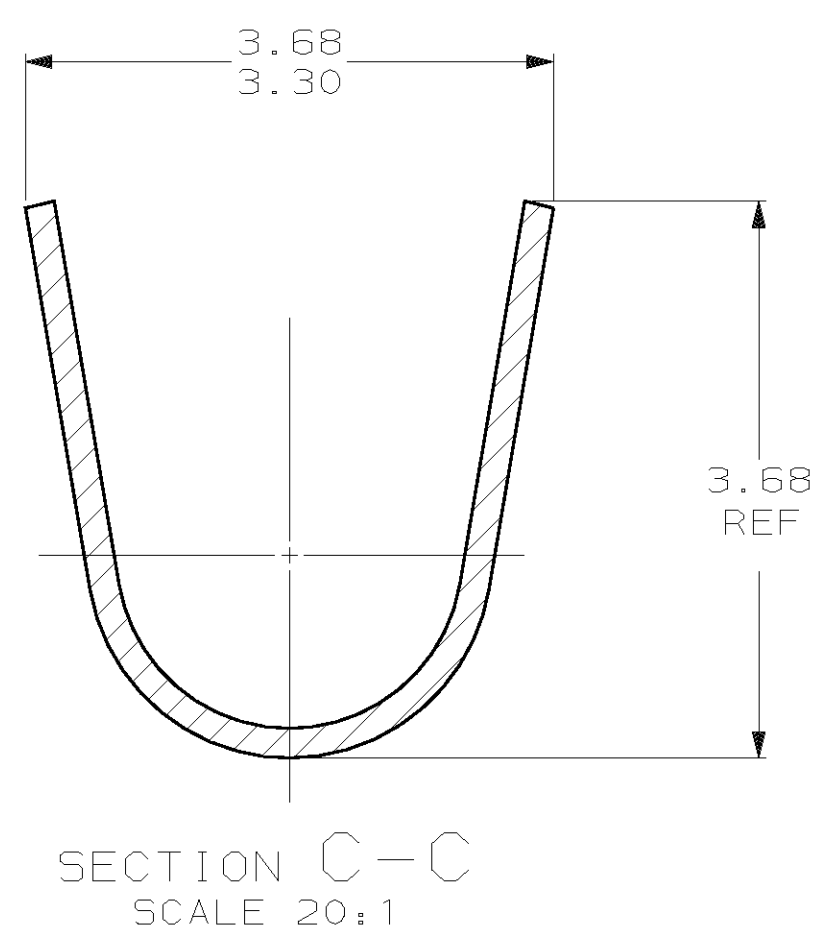
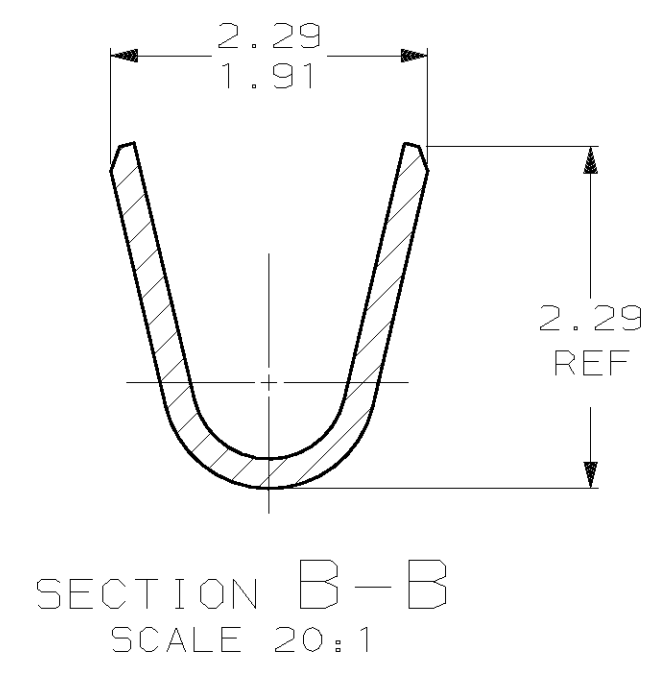


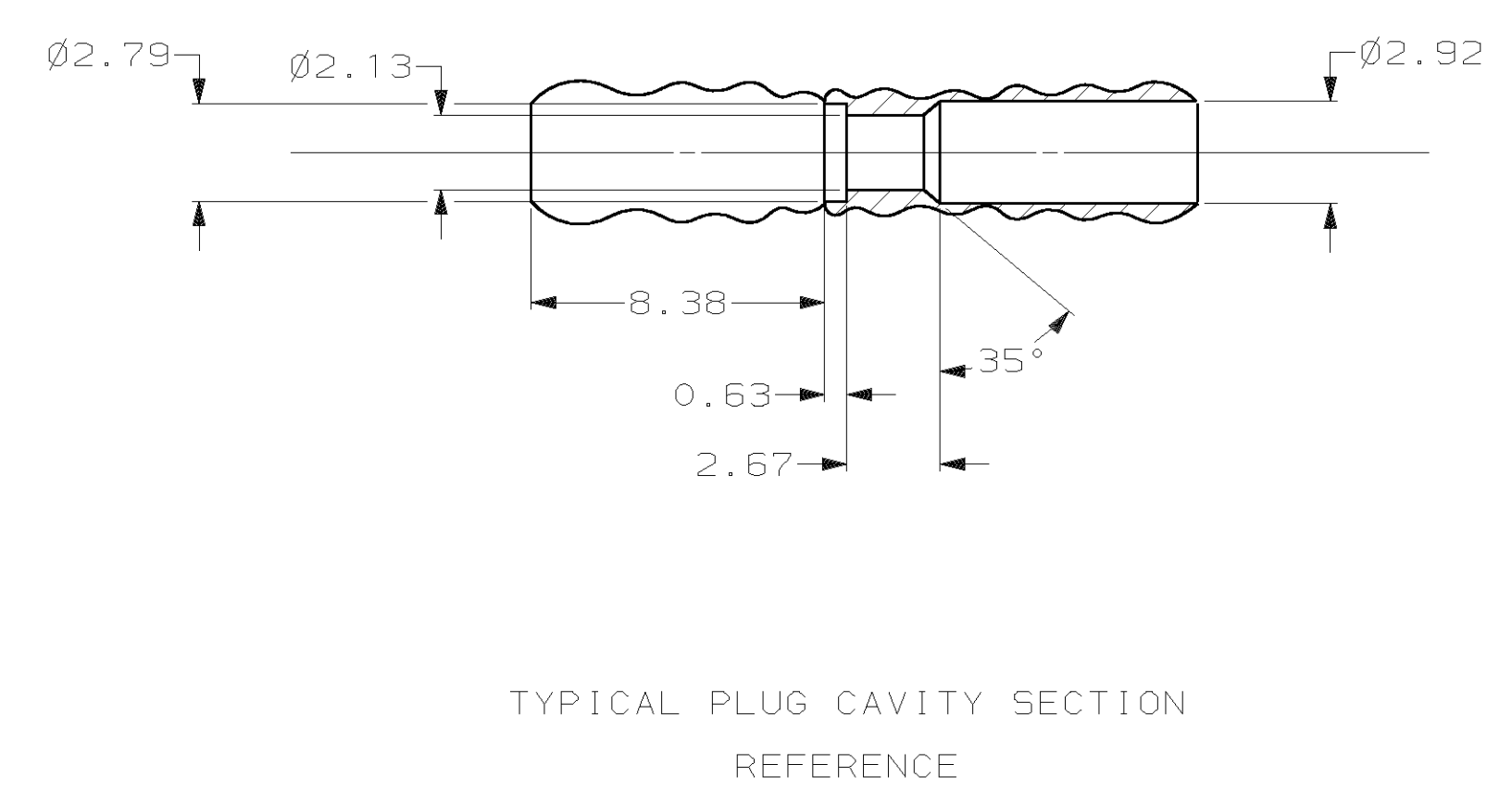
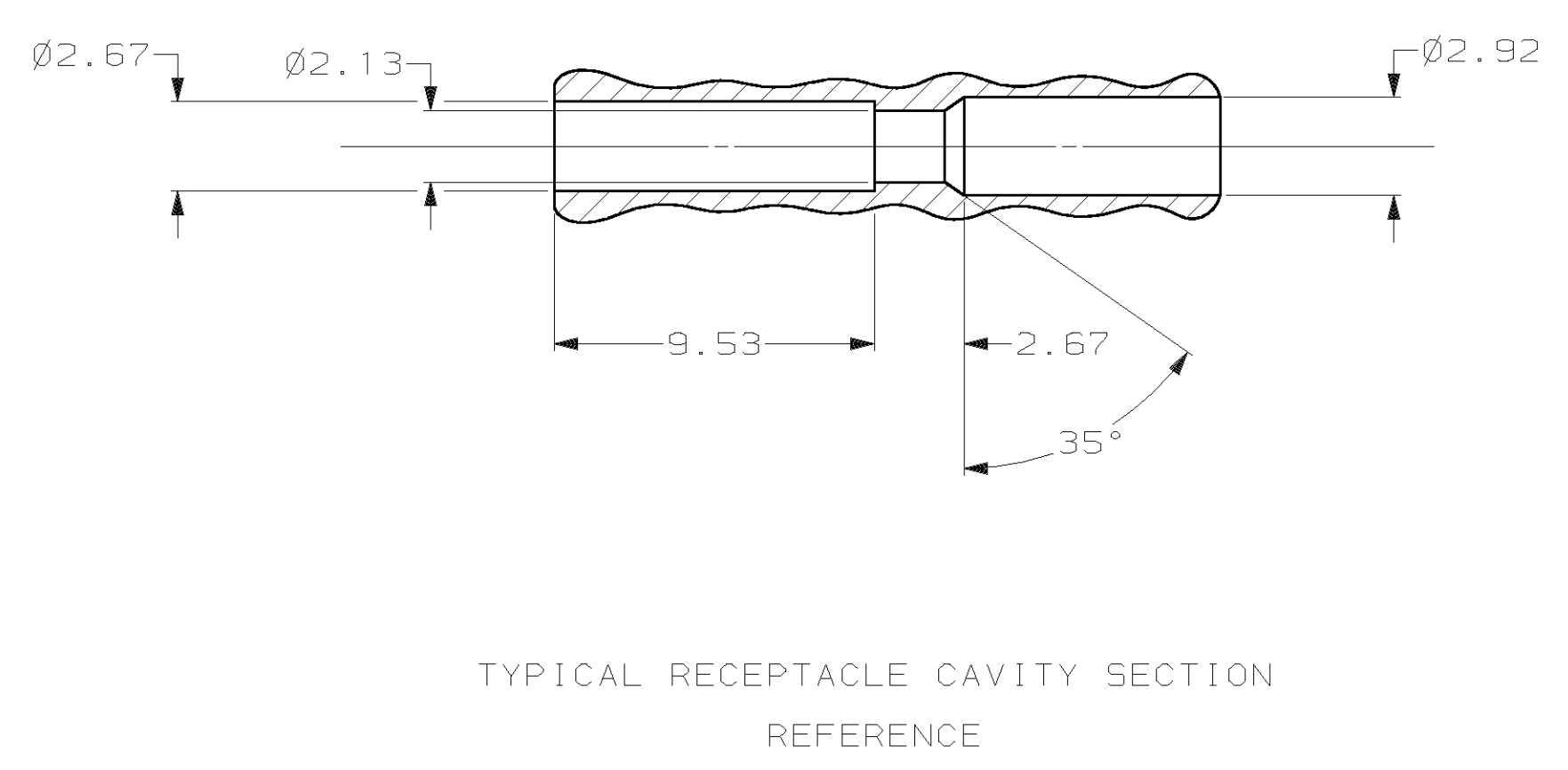
LOC		DIST		P		F		ZONE		LTR		REVISIONS		DATE	APPD	
CM	00												5	REVISED PER EC 063B-0597-02	25-OCT-02	KW DC



- 2 0.0008 MIN GOLD INSIDE RECEPTACLE IN LOCALIZED PLATE AREA, OVER 0.0008 MIN NICKEL.
- 3 EITHER CAVITY WILL ACCEPT RECEPTACLE 350628,640392 OR PIN 350629,640391.
- 4 REELED ON PLASTIC REELS.

-	-
.660	16.76
.375	9.53
.330	8.38
.200	5.08
.145	3.68
.130	3.30
.115	2.92
.110	2.79
.105	2.67
.095	2.41
.090	2.29
.085	2.16
.084	2.13
.082	2.08
.081	2.06
.079	2.01
.075	1.91
.050	1.27
.040	1.02
.025	0.63
.008	0.20
.005	0.13
.000030	0.0008
IN	MM

CONVERSION TABLE



FINISH	MATERIAL	INSULATION DIAMETER	WIRE RANGE	PART NO
PRE-TIN	0.20 BRASS	1.27-2.79	24-18	350628-8
2	0.20 PH.BRZ.	1.27-2.79	24-18	350628-6
3	0.20 BRASS	1.27-2.79	24-18	350628-5
PRE-TIN	0.20 PH.BRZ.	1.27-2.79	24-18	350628-2
PRE-TIN	0.20 BRASS	1.27-2.79	24-18	350628-1

DO NOT SCALE PRINT.
 UNLESS SPECIFIED
 DIMENSIONS IN mm [INCHES]
 TOLERANCES ON:
 2 PLC DEC ±
 3 PLC DEC ± 0.13
 ANGLES ± 0°30'

DR 9-30-91
 K. SALMON
 CHK 9-30-91
 R. SWING
 APPD 10-1-91
 C. CASH
 APPD 10-1-91
 C. CASH

MATERIAL
 SEE TABLE

FINISH
 SEE TABLE

PRODUCT SPEC
 -

APPLICATION SPEC
 -

WEIGHT
 -

AMP AMP INCORPORATED
 Harrisburg, Pa. 17105

NAME
 .062 SOCKET
 COMMERCIAL PIN & SOCKET

SIZE
D 00779

CAGE CODE
 00779

DRAWING NO
 350628

SCALE
 5:1

SHEET
 1 OF 1

